

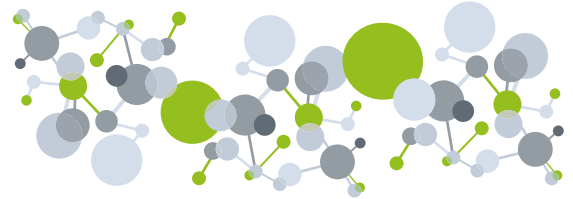
routeST1

Oxford City Centre • Harwell Campus

Mondays to Fridays, except Public Holidays

Bus Number	ST1	ST1	ST1	ST1*	ST1	ST1	ST1	ST1	ST1*	ST1	ST1	ST1	ST1	ST1	ST1	ST1	ST1	ST1	ST1
Oxford City Centre, Broad Street	0635	0705	0735	0755	0820	0850	0915	0935	1000	1030	1100	1130	1200	1230	1300	1330	1400	1430	1430
University Science Area, South Parks Road	0637	0707	0737	0757	0822	0852	0917	0937	1002	1032	1102	1132	1202	1232	1302	1332	1402	1432	1432
Iffley Road, Magdalen Road	0644	0714	0744	0807	0832	0901	0924	0945	1010	1040	1110	1140	1210	1240	1310	1340	1410	1440	1440
Oxford, Canning Crescent	0649	0719	0749	0815	0841	0908	0928	0949	1014	1044	1114	1144	1214	1244	1314	1344	1414	1444	1444
Redbridge Park&Ride	↓	↓	↓	↓	↓	↓	↓	0929	0951	1016	1046	1116	1146	1216	1246	1316	1346	1416	1446
Milton Heights Turn	0703	0733	0803	0830	0856	0922	0944	1003	1028	1058	1128	1158	1228	1258	1328	1358	1428	1458	1458
Harwell Campus, Becquerel Avenue Turning Circle	0714	0744	0814	0841	0907	0933	0953	1012	1037	1107	1137	1207	1237	1307	1337	1407	1437	1507	1507

Bus Number	ST1	ST1	ST1	ST1	ST1	ST1	ST1
Oxford City Centre, Broad Street	1500	1530	1605	1640	1720	1800	1830
University Science Area, South Parks Road	1502	1532	1607	1642	1722	1802	1832
Iffley Road, Magdalen Road	1510	1542	1617	1652	1732	1810	1840
Oxford, Canning Crescent	1514	1550	1628	1703	1740	1816	1846
Redbridge Park&Ride	1516	1552	1630	1705	1742	1818	1848
Milton Heights Turn	1528	1605	1644	1719	1755	1830	1900
Harwell Campus, Becquerel Avenue Turning Circle	1537	1614	1654	1729	1804	1839	1909



routeST1

Harwell Campus • Oxford City Centre

Mondays to Fridays, except Public Holidays

Bus Number	ST1	ST1	ST1	ST1*	ST1	ST1	ST1	ST1	ST1	ST1	ST1	ST1	ST1	ST1	ST1	ST1	ST1	ST1	ST1
Harwell Campus, Becquerel Avenue Turning Circle	0720	0750	0820	0845	0915	0945	1015	1045	1115	1145	1215	1245	1315	1345	1415	1445	1515	1545	1545
Milton Heights Turn	0730	0801	0831	0856	0924	0954	1024	1054	1124	1154	1224	1254	1324	1354	1424	1454	1525	1555	1555
Redbridge Park&Ride	0745	0816	0846	0911	0938	1008	1038	1108	1138	1208	1238	1308	1338	1408	1438	1508	1539	1609	1609
Oxford, Canning Crescent	0746	0817	0847	0912	0939	1009	1039	1109	1139	1209	1239	1309	1339	1409	1439	1509	1540	1610	1610
Iffley Road, Magdalen Road	0754	0826	0856	0917	0943	1013	1043	1113	1143	1213	1243	1313	1343	1413	1443	1513	1546	1616	1616
University Science Area, South Parks Road	0805	0837	0905	0924	0950	1020	1050	1120	1150	1220	1250	1320	1350	1420	1450	1520	1553	1624	1624
Oxford City Centre, Broad Street	0808	0840	0908	0927	0953	1023	1053	1123	1153	1223	1253	1323	1353	1423	1453	1523	1556	1627	1627

Bus Number	ST1	ST1*	ST1	ST1	ST1	ST1	ST1
Harwell Campus, Becquerel Avenue Turning Circle	1620	1650	1710	1735	1810	1845	1915
Milton Heights Turn	1631	1702	1722	1746	1820	1856	1925
Redbridge Park&Ride	1645	1717	1737	1800	1834	1910	1939
Oxford, Canning Crescent	1646	1718	1738	1801	1835	1911	1940
Iffley Road, Magdalen Road	1653	1725	1745	1807	1840	1915	1944
University Science Area, South Parks Road	1701	1733	1753	1814	1847	1922	1951
Oxford City Centre, Broad Street	1704	1736	1756	1817	1850	1925	1954



*These journeys are normally operated by standard double-decker buses to provide additional capacity during peak times.

routeST2

JR Hospital • Oxford City Centre • Wytham

Mondays to Fridays, except Public Holidays

Bus Number	ST2	ST2	ST2	ST2	ST2	ST2	ST2	ST2	ST2	ST2	ST2	ST2	ST2	ST2	ST2	ST2	ST2	ST2	ST2
John Radcliffe Hospital, Stop J3	0705	0800	0905	1005	1105	1205	1305	1405	1505	1605	1705	1805	1909						
Windmill Road, Nuffield Orthopaedic Centre, Stop N6	0712	0809	0913	1013	1113	1213	1313	1413	1514	1613	1713	1813	1915						
Old Road Campus, Lime Walk	0713	0810	0914	1014	1114	1214	1314	1414	1515	1614	1714	1814	1916						
Warneford Lane, Warneford Hospital	0716	0816	0919	1017	1117	1217	1317	1417	1519	1618	1719	1818	1919						
St Clement's Street, Stop C	0721	0821	0923	1021	1121	1221	1321	1421	1524	1623	1725	1824	1924						
University Science Area, South Parks Road	0727	0828	0929	1027	1127	1227	1327	1427	1530	1630	1732	1831	1930						
Oxford City Centre, Keble Road	0732	0833	0934	1032	1132	1232	1332	1432	1535	1635	1737	1836	1934						
Oxford City Centre, George Street, Stop A5	0735	0836	0937	1035	1135	1235	1335	1435	1538	1638	1740	1839	1937						
Oxford Rail Station, Frideswide Square, Stop R8	0738	0839	0940	1038	1138	1238	1338	1438	1541	1641	1743	1842	1940						
Botley Road, Seacourt Park & Ride	0743	0844	0945	1043	1143	1243	1343	1443	1546	1647	1751	1849							
Wytham Village, White Hart	0748	0850	0951	1049	1149	1249	1349	1449	1552	1654	1759	1854							
Wytham, JK Field Station	0752	0854	0955	1053	1153	1253	1353	1453	1556	1658	1803	1858							

routeST2

Wytham • Oxford City Centre • JR Hospital

Mondays to Fridays, except Public Holidays

Bus Number	ST2	ST2	ST2	ST2	ST2	ST2	ST2	ST2	ST2	ST2	ST2	ST2	ST2	ST2	ST2	ST2	ST2	ST2	ST2
Wytham, JK Field Station	0700	0756	0900	1000	1100	1200	1300	1400	1500	1600	1705	1810	1905						
Wytham Village, White Hart	0701	0757	0901	1001	1101	1201	1301	1401	1501	1601	1706	1811	1906						
Botley Road, Seacourt Park & Ride	0708	0806	0910	1008	1108	1208	1308	1408	1508	1608	1713	1818	1913						
Oxford Rail Station, Frideswide Square, Stop R7	0713	0812	0915	1013	1113	1213	1313	1413	1513	1613	1718	1823	1918						
Oxford City Centre, George Street, Stop B1	0716	0815	0918	1016	1116	1216	1316	1416	1516	1616	1721	1826	1921						
Oxford City Centre, Keble Road	0720	0819	0922	1020	1120	1220	1320	1420	1520	1620	1725	1830	1925						
University Science Area, South Parks Road	0725	0825	0927	1025	1125	1225	1325	1425	1525	1625	1730	1835	1930						
St Clement's Street, Stop B	0731	0831	0933	1031	1131	1231	1331	1431	1531	1632	1736	1841	1936						
Warneford Lane, Warneford Hospital	0736	0836	0938	1036	1136	1236	1336	1436	1536	1638	1742	1847	1940						
Old Road Campus, Lime Walk	0738	0838	0940	1038	1138	1238	1338	1438	1538	1640	1744	1849	1942						
Windmill Road, Nuffield Orthopaedic Centre, Stop N5	0741	0842	0943	1041	1141	1241	1341	1441	1541	1644	1748	1852	1944						
John Radcliffe Hospital, Stop J3	0750	0851	0952	1050	1150	1250	1350	1450	1550	1653	1757	1901	1952						

